

TT SOLO 1-NL

featured by TerraTec

QUICK REFERENCE (ENGLISH)

QR8250-02-05.01.00

CE declaration

We:

TerraTec Electronic GmbH, Herrenpfad 38, D-41334 Nettetal, Germany

hereby declare that the product:

TTSolo1-NL

to which this declaration refers is in compliance with the following standards or standardizing documents

1. EN 55022

2. EN 50082-1

The following are the stipulated operating conditions and environmental conditions for said compliance:

Residential, business and commercial environments and small-company environments.

This declaration is based on:

Test report(s) of the EMC testing laboratory



FCC Class B Compliance Statement

NOTE:

This equipment has been tested and found to comply with the limits for a "Class B" digital device, pursuant to Part 15 of the FCC rules and meets all the requirements of the Canadian Interference-Causing Equipment Regulations. These limits are designed to provide reasonable protection against harmful interference in a residential installation. This equipment generates, uses and can radiate radio frequency energy and, if not installed and used in strict accordance with the instructions, may cause harmful interference to radio communications. However, there is no guarantee that interference will not occur in a particular installation. If this equipment does cause harmful interference to radio or television reception, which can be determined by turning the equipment off and on, the user is encouraged to try to correct the interference by one or more of the following measures:

- Reorient or relocate the receiving antenna.
- Increase the separation between equipment and the receiver.
- Connect the equipment into an outlet on a circuit different from that to which the receiver is connected.
- Consult the dealer or an experienced radio/TV technician for help.

TerraTec Electronic GmbH is not responsible for any radio or television interference caused by unauthorized modifications of this equipment or the substitution or attachment of connecting cables and equipment other than those specified by TerraTec Electronic GmbH. The correction of the interferences caused by such unauthorized modification, substitution or attachment will be the responsibility of the user.

The use of shielded I/O cables is required when connecting this equipment to any and all optional peripheral or host devices. Failure to do so may violate FCC rules.

TerraTec® ProMedia, SoundSystem Gold, SoundSystem Maestro, SoundSystem Base1, AudioSystem EWS®64, AudioSystem EWS88 MT, XLerate, XLerate Pro, Base2PCI, TerraTec 128iPCI, TerraTV+, TerraTV Radio+, TerraTValue, WaveSystem, MIDI Smart and MIDI Master Pro are trademarks registered by TerraTec® Electronic GmbH Nettetal.

In most cases, the designations used in this handbook for software and hardware are also registered trademarks and are thus subject to the relevant regulations.

©TerraTec® Electronic GmbH, 1994-2000. All rights reserved 0.05.01.00

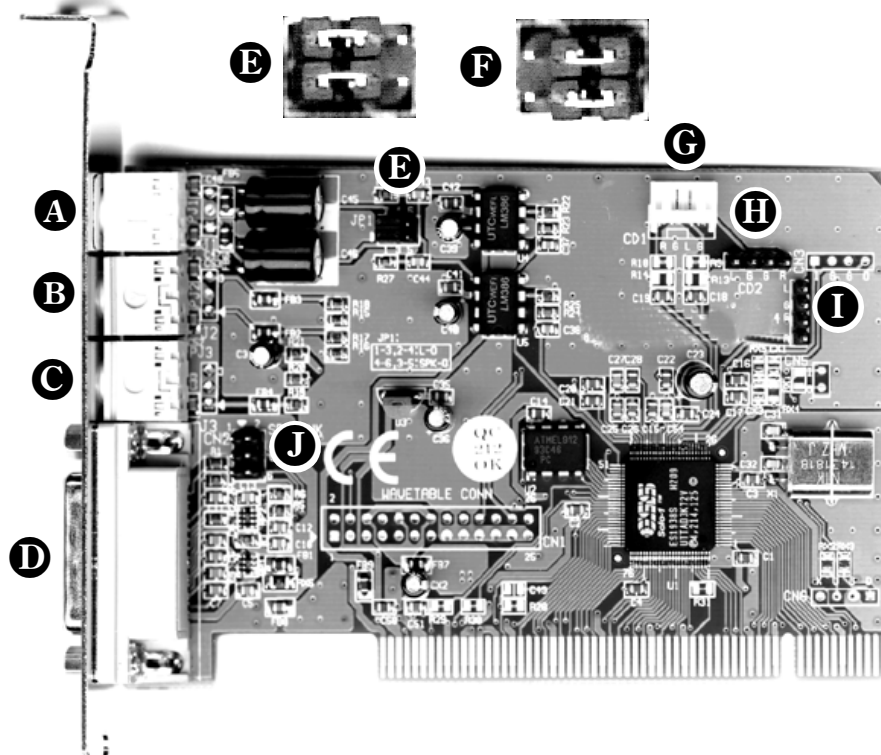
Meticulous care has been exercised in the preparation of all text passages and illustrations in this User Guide. TerraTec Electronic GmbH and its authors, however, accept no liability, legal or otherwise, for errors or the consequences of such errors. We reserve the right to technical modifications.

QUICK REFERENCE

ENGLISH

Dear Customer,

In the following Quick Reference Guide, replace the <CD> symbol with the drive letter assigned to your CD-ROM.



- Ⓐ Line Out
- Ⓑ Line In
- Ⓒ Mic In, mono
- Ⓓ MIDI / Joystick interface
- Ⓔ JP1: Line Out
- Ⓕ JP1: Speaker Out
- Ⓖ Internal CD Audio Connection IDE (CD1 White: right - ground - left - ground)
- Ⓗ Internal CD audio connector (SONY) (CD2: right - ground - ground - left)
- Ⓘ Internal Aux In, stereo (CN4: right - ground - ground - left)
- Ⓝ SB link

TECHNICAL DATA.

AT A GLANCE.

- PCI Plug & Play
- Real-Mode DOS SoundBlaster/Pro-compatible
- Software Wavetable*
- VSpace 3D-Sound
- Enhanced Full Duplex

COMPATIBILITY.

- Microsoft DirectSound
- Microsoft DirectSound 3D
- General MIDI
- MPU-401 compatible
- SoundBlaster/PRO
- OPL3 compatible hardware FM synthesis

DIGITAL AUDIO.

- VSpace 3D Effect
- 8/16-bit audio stereo/mono for recording and playback with up to 48 kHz
- Enhanced Full Duplex
- Record and playback all audio sources

SOFTWARE WAVETABLE.*

- 32 voices, simultaneous
- 1 MB & 3MB Sample set
- GM compatible

* Not available under NT 4.0

AUDIO MIXER.

- Individual level controls for all audio sources

MIDI/JOYSTICK INTERFACE.

- DirectInput compatible
- MPU-401 (UART mode) compatible
- SoundBlaster MIDI interface
- Standard dual gameport (Y-cable)

EXTERNAL CONNECTIONS.

- Switchable speaker/line-OUT (3.5 mm jack)
- Line In (3.5 mm jack), Mic In (3.5 mm jack)
- MIDI/joystick interface (IBM 15-pin Sub-D)

ONBOARD CONNECTIONS.

- IDE/Sony CD audio connectors
- Aux In, stereo
- SB link

ONBOARD AMPLIFIER.

- Stereo amplifier, 2 x 500 mwatts

DRIVERS.

- MS-DOS 7.0, Windows 95/98, Windows NT 4.0

SYSTEM REQUIREMENTS.

- One free PCI 2.1 compatible PCI slot
- P166, P200 MMX recommended
- 16MB, 32MB recommended
- CD-ROM drive for Driver & Installation CD
- 10 MB free hard disk space
- Speakers or headphones
- Windows 95/ 98 with DirectX 5.0 or higher, or Windows NT 4.0 min. SP3

DRIVER INSTALLATION.

Please note that automatic driver installation (the simplest installation method) through the setup program in Windows 95/98 is only possible if the sound card has not yet been installed! This restriction does not apply for Windows NT 4.0..

INSTALLATION INSTRUCTIONS FOR WIN95, WIN95 (OSR2).

Insert the CD-ROM in your CD-ROM drive. Switch to the folder<CD>:\DRIVERS\WIN9X and start the program **SETUP.EXE**. Follow the instructions of the installation program. Install the soundcard as described in the Hardware Installation chapter. The next time you restart your computer the soundcard drivers will be automatically installed.

INSTALLATION INSTRUCTIONS FOR WIN98, WIN98 SE.

Insert the CD-ROM in your CD-ROM drive. Switch to the folder<CD>:\DRIVERS\WIN9X and start the program **SETUP.EXE**. Follow the instructions of the installation program. Install the soundcard as described in the *Hardware Installation* chapter. The next time your computer is started a *PCI Multimedia Device* will be recognized and Microsoft's hardware assistant will be started. Confirm with *Next*. Choose *Search for the best driver for your device (recommended)* and click *Next*. Activate the entry *Specify a location* and click *Next*. Follow the instructions given by the hardware assistant.

CONFIGURATION OF THE SOFTWARE WAVETABLE.

The software wavetable is automatically installed under Windows 9x when the drivers are installed. To activate the software wavetable, proceed as follows:

- Start the Device manager.
- Choose the device *ESS Solo-1 PCI AudioDrive* under *Sound, video and game controllers*.
- Click on Properties and switch to the *Wavetable* card.
- Activate the box labeled *Enable*.
- Choose between the 1MB and the 3MB sample set and confirm with *OK*.

In order for the MIDI applications to be able to use the software wavetable, the wavetable has to be selected as an output device.

- Go to Start → Settings → Control Panel → Multimedia.
- Switch to the MIDI card
- Choose the software wavetable.

INSTALLATION INSTRUCTIONS FOR WINDOWS NT 4.0. (MIN. SERVICEPACK 3).

Please ensure that you are logged on as Administrator when installing the drivers.

Install the soundcard as described in the Hardware Installation chapter. Insert the CD-ROM in your CD-ROM drive. Switch to the folder <CD>:\DRIVERS\WINNT and start the program SETUP.EXE. Follow the instructions of the installation program.

HARDWARE INSTALLATION.

Before installing the sound card, please take note of any special points pertaining to the configuration of your computer. Also refer to the handbook of your computer and other expansion cards for their settings.

Please observe the following instructions to ensure a trouble-free installation.

If difficulties arise nevertheless, please reread the relevant chapter in this handbook carefully.

WARNING! – Before opening the case, unplug the mains cable from the wall socket as well as from the PC.

ESD (electrostatic discharge) may damage disk drives, add-on boards and other components. The steps described should only be carried out at an ESD workstation. If one is not available, you can prevent electrostatic discharge by wearing an antistatic arm band and holding it to a metal part of the system housing.

Please note that opening the housing in no way breaches the conditions of guarantee provided that you do not carry out any modifications to the hardware components inside. Any unauthorized expansion of the PC may however affect your rights under the terms of the guarantee. Any such work should be discussed beforehand with your specialist dealer.

Now it's time to arm yourself with a Phillips screwdriver.

And here's what to do, step by step:

- Turn off your computer and any other peripheral devices. Leave the AC cord connected for the time being, so that your computer is still grounded.
- Touch the metal chassis at the rear of the PC to ground yourself and discharge static. Now unplug the cord from the AC mains socket.
- Remove the cover from the case of your PC.

-
- Look for a free PCI expansion slot, remove the screw holding the slot blanking plate and remove the plate. To ensure the optimal function of your sound card, look for an expansion slot that is not immediately next to an already-installed card. Some cards, such as video adapters, can send out signals which can interfere with the sound card.
 - Carefully remove the sound card from its packaging and pick it up by the edges with one hand while your other hand is resting on the metal of the PC case.
 - This will ensure that your body is completely discharged via your computer without affecting the sound card. Do not touch the components of the card under any circumstances.
 - Align the holder at the rear of the sound card in the expansion slot in such a way that the card's connectors are directly in line with the slot's socket.
 - Carefully seat the card in the slot. You might have to press the card firmly into the slot to make a good contact. Take care to ensure that the contacts are precisely in line, in order to avoid damaging the sound card or the motherboard in your PC.
 - Insert and tighten the screw from the slot cover to secure the sound card in its slot.
 - Connect the CD-ROM drive to the sound card with the audio cable. (In general, this cable is provided with the CD-ROM drive).
 - Reinstall the cover of your PC case.
 - Connect your speakers or hifi stereo system to the sound card.
 - Reconnect the mains and all other cables. Make sure that your speakers or hifi system is set to low volume. Start your computer.

SOFTWARE INSTALLATION.

AUDIORACK.

Start **SETUP.EXE** in the subdirectory `<CD>:\AUDIORACK` from the CD-ROM. Follow the instructions of the installation program.

ONLINE QUICK REFERENCE.

Start **SETUP.EXE** in the subdirectory `<CD>:\QUICKREFERENCE` from the CD-ROM. Follow the instructions of the installation program.